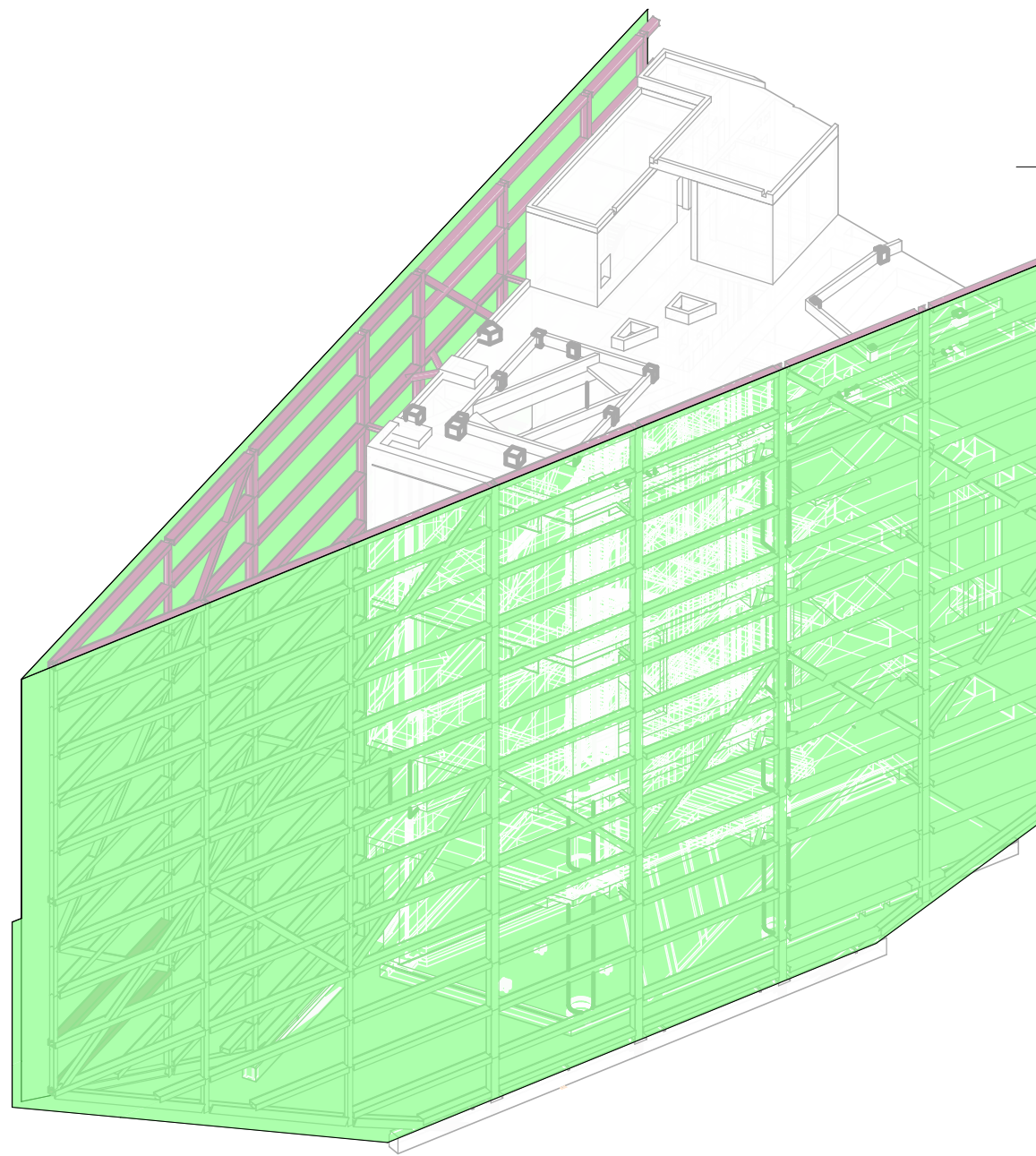


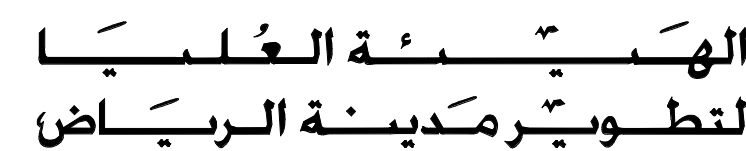
### CONSTRUCTION SEQUENCE - 05

CONTINUE INSTALLING STEELWORK ENSURING STRUCTURE IS VERTICALLY AND Laterally PROPPED.



### CONSTRUCTION SEQUENCE - 10

INSTALL CLADDING IN COMPLETE ROWS ON BOTH SIDES OF STRUCTURE SUCH THAT IT LOADS THE STRUCTURE EVENLY.

[illegible]

DRAWING NUMBER	REVISION
M-BAR-1F4TS0-CB00-EDR-204352	000